

# EARTH ADVENTURES



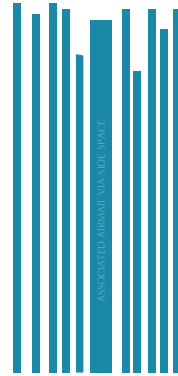
AN EIGHTEEN -DAY JOURNEY THAT WILL LEAVE YOU WITH THE MEMORIES OF A LIFETIME.

VISIT THE WORLD OF YOUR ANCESTORS, BREATHE THE AIR THEY BREATHED AND EVEN HUNT THE CREATURES THAT DESTROYED IT ALL.

Dear Mr. & Mrs. Gatto:

We at Earth Adventures realize you have made a significant investment into this excursion, and we wish for it to be everything you ever hoped for. In order to maximize your adventure, please read the contents of this manual in its entirety. This is extremely important, as your final destination, Post-Apocalyptic Hollywood (which we will call PAH from now on), has some inherent dangers with which you might not be familiar, as well as some optional adventures that you might enjoy.

So, let us begin!



**Michael and Clarisa Gatto**  
6745 Bodega Blvd  
Córdoba, Córdoba Provincia  
Nueva Argentina, Azul  
5422365

EARTH ADVENTURES  
SUITE 109  
FLOOR 5 240 WANDALOO ESP  
NEW SYDNEY NSW 7754  
OZ, AZUL



## Reviews

*"We signed up for the Earth Adventures PAH Tour and were totally pleased. Our son Billy will never forget the Vrol feeding demonstration."*

Margaret Jones, Perth, Oz

*"Thanks EA! You guys are the best! Even though my fiancée is MIA it was still the best vacation ever!"*

J. Dahmer, New New York, America

*"How amazing is it that PAH is invisible to space-based satellites! What a mystery. I must discover the technology behind this."*

Jorgen Bierle, Azul System President, Zürich, Neu Schweiz

## PORT OF CALL



Your port of call will either be the brand-new, rebuilt Blue Mil, in New Sydney, Oz, or BANF in Buenos Aires, Nueva Argentina. From either of these locations you will spend a small amount of time going through pre-customs, as well as receiving some inoculations – Earth has some viral and bacteriological dangers that can cause anything from diarrhea up to facial disfigurement (and in some rare cases, corporeal detonation).

Note: Travelers departing from Blue Mil can purchase the optional Crater Exploration Package, and walk through the devastation that was once New Sydney, as well as experience a guided tour of the rebuild efforts making the New New Sydney. Interested parties should inquire before your travel date to Blue Mil, as this will affect your arrival time.

Note: **Please DO NOT SKIP INOCULATIONS**

The waiting areas in the two locations are identical, and each offers a complimentary, all-you-can-eat buffet that features roasted cuts of beef, pork and draxon, as well as a salad bar with more than 20 cold-cut items and a plethora of desserts.

Please remember to take your BOWEL evacuation pill at least 30 minutes prior to boarding your shuttle to your cruise ship, especially if you have chosen the sleep option.

## MARS



Upon arrival in the planetary system of our ancestors, we will drop out of Side Space near the fourth planet – Mars. Once containing a thriving, inhabited colony, Olympus Mons is a scene of Vrol devastation, being the first target of the aliens when they attacked mere months after the exodus of our ancestors. We will orbit Mars, and you will see the ruins of the settlement via large vid screens, before we move on to Earth via ion-fusion drive.



After a short 24-hour flight, our first destination on Earth is what was formerly known as Lima, Peru. After disembarkation, you will go through Earth Customs, and then enjoy lunch in the newly-rebuilt Hard Rock Café at Larco Mar, situated on a cliff and overlooking the Pacific Ocean. Be sure to have someone snap an image of you sitting on the very barstool where Dr. Gunnarsson sat where he discovered the amoebic plague that the Vrol used to wipe out mankind.

## EARTH

Note: Earth gravity is less than that of Azul, so you will feel much stronger than normal. Please take this into account when walking, running or playing. Your friendly Earth Adventures guide will assist you in your acclimation to Earth gravity upon landing. A short airbus tour will be provided through the ruins of this once-great city. We will visit Jorge Chavez Airport, where Dr. Gunnarsson landed his shuttle craft and first tested for alien microbes.

## MACHU PICCHU



Later you will take a short flight to the mythical ruins of Machu Picchu, where Gunnarsson hid from Azul Naval Defense Forces while he compiled all of his data, proving Earth had been attacked, and that Azul was in danger of suffering the same fate. Explore the ruins, witness the power of the Urubamba River, and take the footpath to see a replica of Dr. Gunnarsson's original Side Space shuttle, aptly named *The Machu Picchu*.

Note: Please stay on the elevated paths when at Machu Picchu, as the entire area is an Azul Heritage Preservation location, and there are numerous archaeological digs in progress.



## PAH (POST-APOCALYPTIC HOLLYWOOD)



### Prime Angel Transportation

Your trip to PAH will be provided through Prime Angel Enterprises. Board their brand-new shuttle that will transport you to PAH, landing at your destination – Hotel California, located on the corner of Santa Monica Blvd and Melrose.

Note: All passengers will be completely sedated for the duration of this leg of the trip. PAH is a protected area, and only accessible to Earth Adventures by agreement with Prime Angel.

Upon arrival at your destination Mr. Dons, the proprietor of Hotel California will greet you. He is also the owner of the swanky nightclub, Seven Sins, situated across the street from your hotel. Here you will meet Kam Andreesen, your hotel manager, and after a brief orientation you will be shown to your rooms. Please read the following regarding the local population.

Note: You may hear rumors of magic and mages. These are from Earth historical lore, and are not to be taken seriously. If any local resident approaches you with claims of magic, please use caution. Earth Adventures is not responsible for injury or bodily harm caused by participation in unauthorized activities.

### PAH Residents

It is vital you read the following detail on the locals of PAH. There exist an eclectic mix of enhanced subspecies here, and Earth Adventures cannot be held liable for abject stupidity in interaction with these beings.

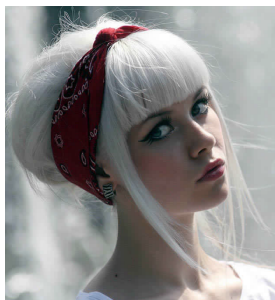
## LYCANS



It is most certain you are familiar with the lycan subspecies, as they are partially responsible for defeating the Vrol during the invasion of your home world. In PAH there are also lycans, but they are slightly different from those with whom you are familiar on Azul.

PAH lycans are substantially more aggressive (and savage) than their Azulian counterparts, but have the distinct advantage of not turning to werewolves during the full moon (of which there is only a single one approx. every five weeks). In fact, the locals like to say, "a lycan on the full moon is a great friend, indeed," due to their overt friendliness. Still, in any case, please take care when around any lycans, especially those who are not employed by Earth Adventures or Prime Angel Enterprises, our partners.

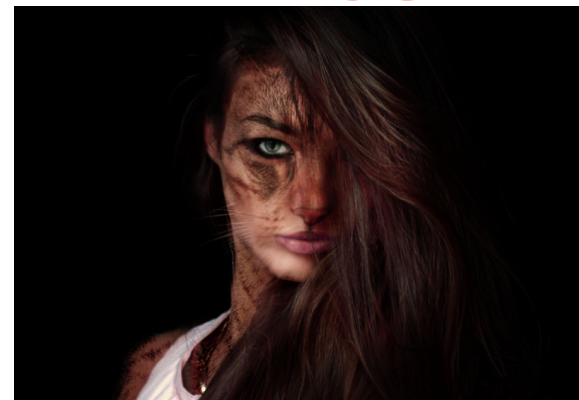
## VAMPIRES



Though a point of common and frequent denial, there really are inactive vampires on Azul. Their cousins on Earth, however, are fully active. These individuals are probably the kindest, most gentle creatures you will encounter in PAH, and make up the majority of Earth Adventures employees.

Your entertainment guide, Jelly Johnson, is the singer of the Seven Sins House Band, and she will take part in your guided tour throughout the city. It is safe to say that any PAH vampire will be courteous and helpful, and they will strive to assist you in most any way possible.

## NEKOS



A subspecies that does not exist on Azul, the Neko is quite different from anything you may have encountered before. Resembling a tailed, cat-like humanoid, these furry, odd-speaking beings are extremely friendly, and most work for the Seven Sins/Hotel California Resort complex. If you find yourself intrigued by these attractive creatures (of which all are female), please speak with your tour guide for extra, private services rendered.

## NORMALS



Of course, no tour would be complete without meeting actual Earth humans! Virtually identical to Azulians, these hard-working individuals tend to be a bit taller, and have lighter skin, as there is only one sun in this system. When dealing with PAH humans please take care, as the average Azulian is significantly stronger, and you can injure any of them with something as simple as a handshake.

## VROL



Unlike Azul, where all Vrol were eliminated, a whole colony of the creatures exists on the outskirts of PAH. Unless you sign up for the optional Vrol Hunt Adventure, you will probably only see Vrol held in captivity at the Hollywood Zoo. Still, these are frightening enough, and the zoo tour is recommended for all – especially during feeding hours.

### Vrol Hunt Adventure

Offered as an optional tour for the bravest of the brave, Mr. Dons will personally lead you into the badlands outside PAH, where you shall encounter a Vrol nest and earn your own teeth, just like a local. Note: A Vrol kill is not guaranteed, and this package is not available during the species' seasonal hibernation, from the months of April to June (Earth calendar). A supplementary contractual agreement is required, as well as proof of prior military service for weapon handling experience assurance.

### Day One:

Arrive at the luxurious Hotel California, where you will check-in after a brief greeting. Two hours after check-in a hot buffet will be provided downstairs in the restaurant, featuring common Earth fare, such as beef, chicken and rabbit. We might suggest you try the farmed alligator. It is curiously similar to draxon.

After mealtime, small groups will be taken for walks down the rebuilt sections of Santa Monica Blvd. Here you will visit local merchant shops, and have an opportunity to purchase souvenirs.

The walking tour will end at the steps of Seven Sins, PAH's hottest venue, where the Seven Sins House Band will perform for you while you sample true Earth whiskies and beers.

## TOURS



### Day Two:

Breakfast is served at 0700 hours, and at 0800 all guests board specially-armed all-terrain buses for a trip to the Sign of the Eternal Flame. Once known as The Hollywood Sign, various methane leaks cause a perpetual fire to burn, which curiously doesn't destroy what was once one of Earth's most famous landmarks. There is a short hike on this excursion, but shouldn't present any difficulty to an Azulian of standard health. Please inform your tour guide if you do not wish to exit the tour bus.

Downtown Los Angeles – Your buses will then take you to the ruins of the once proud city of Los Angeles, where people still live in broken high rises and underground shelters. There is no off-boarding during this time (except during the Vrol hibernation period), due to predatory dangers. A delicious box lunch is provided.

The trip back to PAH provides breathtaking vistas, as you navigate back through the Hollywood Hills. Be sure to snap as many images as you can - reconstruction is going on as we speak, and PAH may never look the same.

On return, you will be treated to drinks and hors d'oeuvres in Seven Sins, before taking a couple hours to rest before dinner.

And no evening would be complete without a sit-down dinner at PAH's hot, new restaurant, **Gabriel's Grill**. Try their already-famous Steak a la Jessica, or Pandy's Pasta, among other delicious items on the menu. And don't forget to finish your meal with the most delicious angel food cake in the system.

## PARTY



### Day Three:

Board your all-terrain buses for a day trip to see the mighty Pacific Ocean, explore the ruins of the Santa Monica Pier, and then drive up north on the Pacific Coast Highway, all the way to Malibu, which has been rebuilt as a human settlement. Here you will be able to shop at local artisan enclaves, surf or even ride mountain bikes on a guarded, guided trail tour. That evening you will take part in an outdoor BBQ / rock concert, with all of the PAH locals invited. Let your inhibitions run wild, as you dance with nekos, drink tomato juice-laced beer with vampires and arm wrestle with lycans (who think they are stronger than they actually are). The bars in Seven Sins, Gabriel's Place and Hotel California are open and all-you-can-drink for members of Earth Expeditions tour to PAH, so party as hard as you like (and don't worry - the locals have a special, secret hangover cure that works!)

### Return Home:

All great things come to an end, so on day four, after an amazing breakfast and some last-minute shopping, Prime Angel's shuttle will again pick you up for your return voyage to Lima. There you will have a chance to buy some final souvenirs and capture any images you may have previously forgotten.

Your voyage home will be in deep sleep, so it will be like a snap, and feel like a dream.

Congratulations! You have just had the adventure of a lifetime.